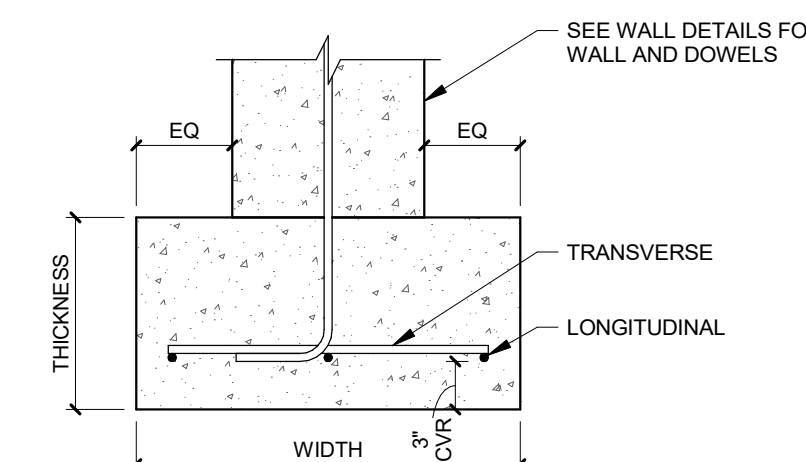


- FOUNDATION NOTES**
1. ELEVATION SLAB ON GRADE = 100'-0" UNO.
 2. ELEVATION TOP OF INTERIOR FOOTINGS = 99'-0" UNO.
 3. ELEVATION TOP OF EXTERIOR FOOTINGS = 98'-0" BUT NOT LESS THAN 24" BELOW EXTERIOR GRADE TO BOTTOM OF FOOTING UNO.
 4. ELEVATION TOP OF FOUNDATION WALLS = 100'-0" UNO.
 5. ELEVATION TOP OF PIERS = 99'-0" UNO.
 6. SEE S-301 FOR STRUCTURAL NOTES.
 7. SEE S-301 FOR TYPICAL FOUNDATION DETAILS.
 8. P1 INDICATES PIER DETAIL. SEE S-301.
 9. CENTER ALL FOOTINGS ON COLUMN LINES UNO.
 10. DOWEL HORIZONTAL REINFORCEMENT FROM NEW FOOTINGS AND FOUNDATION WALLS INTO EXISTING USING HILTI HIT-HY 200 V3 EPOXY (OR APPROVED EQUAL) WITH 6" EMBEDMENT.
 11. SF INDICATES STEP FOOTING. SEE TYP STEP FOOTING DETAIL ON S-301.
 12. PROVIDE 4" CONCRETE SLAB-ON-GRADE WITH 66-111 40W14 WWF WITH CONTROL JOINTS AT 12'-0" OC MAXIMUM SPACING IN BOTH DIRECTIONS UNO.
 13. SEE S-401 FOR ANCHOR BOLT DETAILS.
 14. ALONG EXISTING WALL EXCAVATE DOWN TO EXISTING FOOTING IN LENGTHS AS NECESSARY TO PREVENT WALL MOVEMENT AND REPLACE WITH COMPACTED ENGINEERED FILL.
 15. EXISTING CONSTRUCTION SHOWN WITH GREEN COLOR.
 16. UNDERGROUND PLUMBING SHOWN FOR REFERENCE ONLY.

SPREAD FOOTING SCHEDULE		
MARK	SIZE	REINFORCEMENT
F3.0	3'-0"x2'-0"x12"	(4) #4 EW
F4.0	4'-0"x4'-0"x12"	(4) #5 EW
F5.0	5'-0"x5'-0"x12"	(5) #5 EW
F6.0	6'-0"x6'-0"x12"	(7) #5 EW
F8.0	8'-0"x8'-0"x24"	(9) #6 EW
F9.0	9'-0"x9'-0"x24"	(10) #6 EW



WALL FOOTING SCHEDULE				
MARK	THICKNESS	SIZE	REINFORCEMENT	
WF24	12"	24"	(2) #5	
WF42	12"	36"	(3) #4	#4 @ 12" OC

FOUNDATION PLAN
SCALE: 3/16" = 1'-0"

TowerPinkster
Architecture - Interiors

Risepointe
architecture • design • interiors
100 W. MAIN ST. SUITE 100
ELIZABETH, NC 27833
P 252.581.6337

PROCESSED BY IMPROVEMENTS FOR
townSouth
CHURCH
TOWNE SOUTH CHURCH
2224 PEARTREE RD.
ELIZABETH CITY, NC 27809

ARCHITECTURE
RESPONTE
CONTACT CHRIS STRASSER
205 N. HARRISON LANE 101
ALCONTO, IL 60102
P 630.590.8085
WWW.RESPONTE.COM

GENERAL CONTRACTOR
AA DRESSON
CONTACT CHRIS MORRIS
134 E. RICH BLVD.
ELIZABETH CITY, NC 27809
P 252.382.8171
WWW.AADRESSON.COM

CIVIL ENGINEERING
EASTERN CAROLINA CONSTRUCTION
CONTACT BRENT ROBEY
134 US HWY 108 E
CAMDEN, NC 27805
P 252.621.3570
WWW.EASTERNCAROLINAENGINEERING.COM

STRUCTURAL
TOWER PINKSTER
CONTACT SAILEY RAMLER
4 FULTON ST. E 400
GRAND RAPIDS, MI 49503
P 616.696.9941
WWW.TOWERPINKSTER.COM

MECHANICAL
TOWER PINKSTER
CONTACT DENVER WESSELS
4 FULTON ST. E 400
GRAND RAPIDS, MI 49503
P 616.696.9941
WWW.TOWERPINKSTER.COM

ELECTRICAL
TOWER PINKSTER
CONTACT CHANAKA NICHOLSON
4 FULTON ST. E 400
GRAND RAPIDS, MI 49503
P 616.696.9941
WWW.TOWERPINKSTER.COM

PLUMBING
TOWER PINKSTER
CONTACT DENVER WESSELS
4 FULTON ST. E 400
GRAND RAPIDS, MI 49503
P 616.696.9941
WWW.TOWERPINKSTER.COM

AUDIO-VIDEO-LIGHTING-ACOUSTICS
LIVESPACE
CONTACT JERAM HENRY
4800 STARS ST SE
GRAND RAPIDS, MI 49546
P 616.697.8641
WWW.LIVESPACE.COM

INFORMATION TECHNOLOGY
INTULISE
CONTACT CHRIS STEB
15 FORDSHIRE DR
LANCASTER, PA 17601
P 717.796.0385
WWW.INTULISE.COM

NO.	DESCRIPTION	ISSUE DATE
A	ISSUED FOR PERMIT	2020.03.13
B	ISSUED FOR 95% CD	2020.04.30

PROJECT NAME
TOWNE SOUTH CHURCH
2224 PEARTREE RD.
ELIZABETH CITY, NC 27809

CURRENT ISSUE
ISSUED FOR 95% CD
2020.04.30

SHEET NAME
FOUNDATION PLAN

PROJECT NUMBER
25-823

SCALE
As indicated

DRAWING NUMBER
S-101